



**FIDAN**  
PROPERTY

FI 720

# General Information

Location **Istanbul – Eyup**

Apartment type **2+1 - 4+1**

Price **Starting from 270.000 \$**

Area **81 - 172 m2**

Distance to Taksim **30 Minutes**

Distance to Istanbul Airport **34 Minutes**

Distance to Metro Station **4 Minutes**

Delivery date **04 / 2024**



# FIDAN PROPERTY



# Price list & Payment method

## 2+1

81 - 92 m<sup>2</sup>

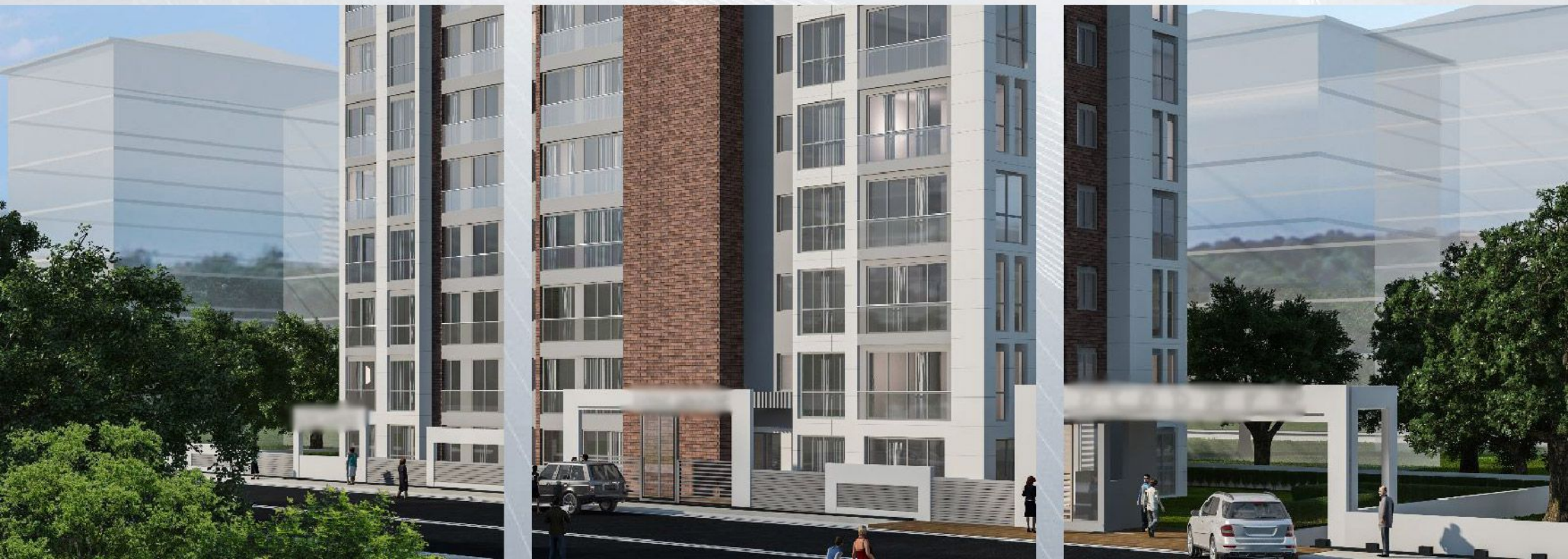
270.000 - 280.000 \$

## 4+1

141 - 172 m<sup>2</sup>

500.000 - 540.000 \$

## Cash & Installment Option



(2+1)

ZEMİN 1.2.3.4.5.6.7.8.9. KAT

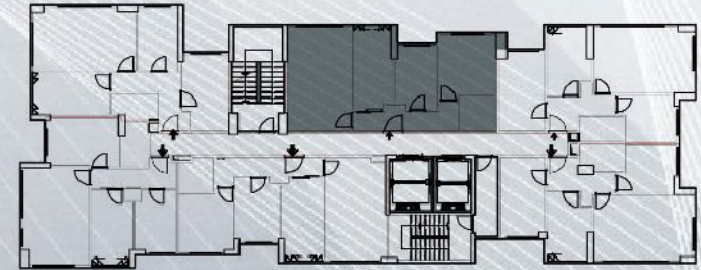
5, 11,17,23,29,35,41,47,53,59 NO'LU DAİRE



1	SALON	20.77 m <sup>2</sup>
2	CAM BALKONLU MUTFAK	10.66 m <sup>2</sup>
3	YATAK ODASI	11.16 m <sup>2</sup>
4	YATAK ODASI	8.27 m <sup>2</sup>
5	ANTRE	7.70 m <sup>2</sup>
6	BANYO	3.80 m <sup>2</sup>

DUVAR DAHİL NET ALAN :69.81 m<sup>2</sup>

BRÜT ALAN: 87.49 m<sup>2</sup>



(4+1)

## 9. NORMAL KAT 58 NO'LU ÇATI DUBLEKSİ



DAİRE NORMAL KAT PLANI

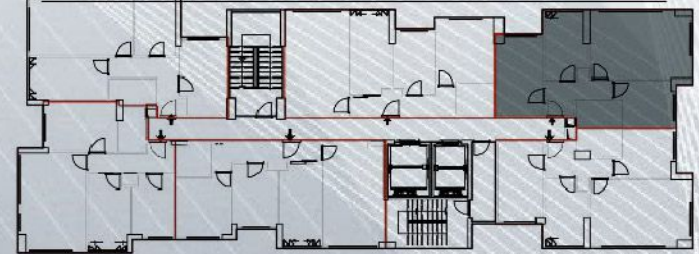
1	SALON	25.04 m <sup>2</sup>
2	CAM BALKONLU MUTFAK	8.80 m <sup>2</sup>
3	YATAK ODASI	11.74 m <sup>2</sup>
4	ANTRE	7.77 m <sup>2</sup>
5	BANYO	3.64 m <sup>2</sup>
6	YATAK ODASI	22.99 m <sup>2</sup>
7	YATAK ODASI	10.70 m <sup>2</sup>
8	YATAK ODASI	10.66 m <sup>2</sup>
9	HOL+MERDİVEN	6.83 m <sup>2</sup>
10	BANYO	5.02 m <sup>2</sup>
11	BANYO	3.33 m <sup>2</sup>
12	TERASLAR	9.63 m <sup>2</sup>



DAİRE ÇATI PLANI

DUVAR DAHİL NET ALAN :147.62 m<sup>2</sup>

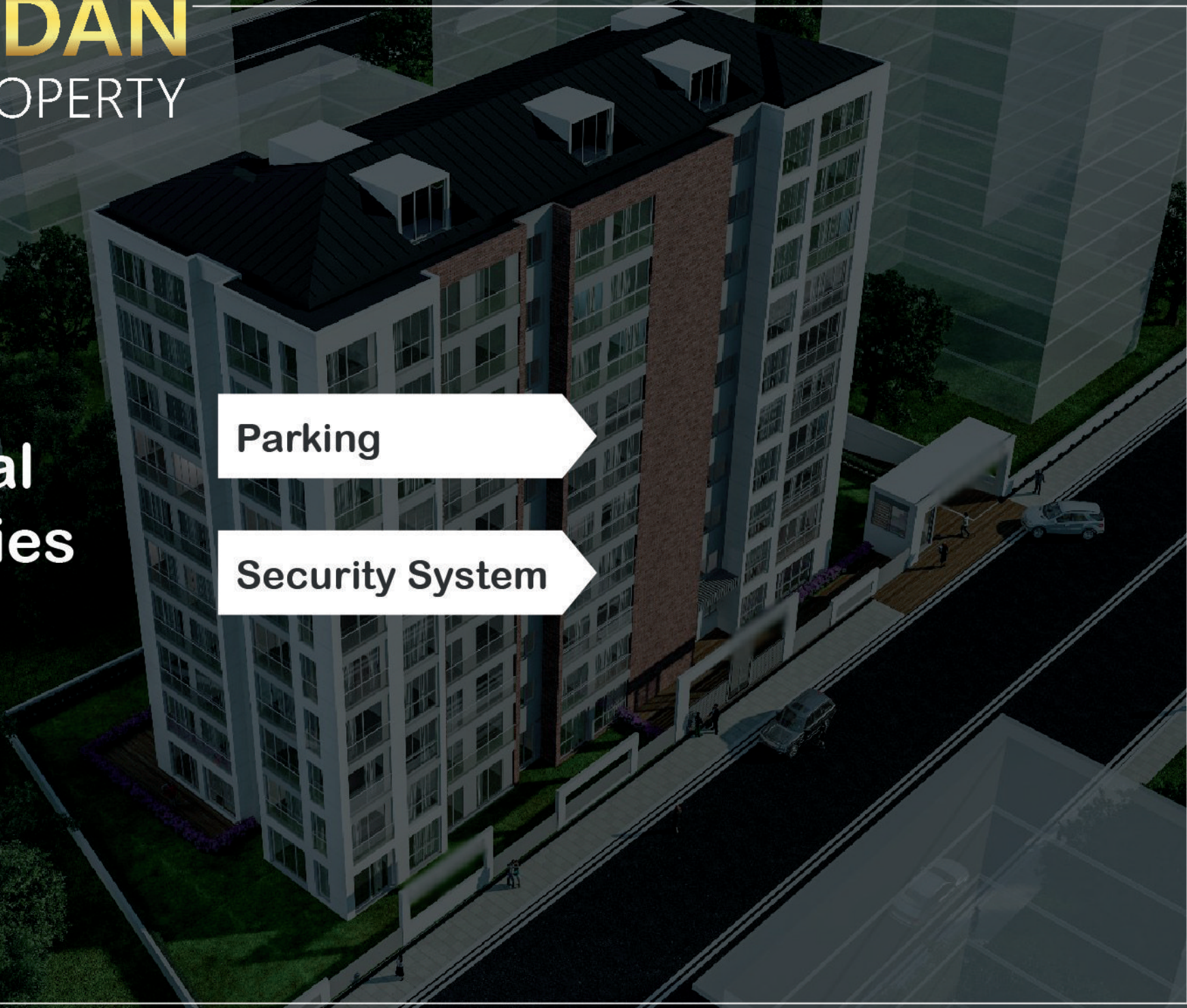
BRÜT ALAN: 165.30 m<sup>2</sup>




**Social  
Facilities**

**Parking**

**Security System**





# FIDAN PROPERTY





# Project Location

Istanbul Airport : 33 km

Golden Horn : 5 km

Metro Station : 1 km

Taksim : 10 km

Eminönü : 12 km

Nearest Mall : 600 m

Nearest Hospital : 2 km





The logo features a stylized, golden silhouette of a city skyline with several buildings of varying heights. To the right of this icon, the word "FIDAN" is written in a large, bold, golden sans-serif font, and the word "PROPERTY" is written below it in a smaller, white, sans-serif font.

**FIDAN**  
PROPERTY

 +90 552 866 55 57

 [info@fidanproperty.com](mailto:info@fidanproperty.com)

 [www.fidanproperty.com](http://www.fidanproperty.com)