



**FIDAN**  
PROPERTY

FI 689

# General Information

Location Istanbul – Pendik

Number of apartments 868

Apartment type 2+1 - 3+1 - 4+1

Price Starting from 270.000 \$

Area 103 – 145 m2

Distance to Taksim 45 Minutes

Distance to Sabiha Airport 13 Minutes

Distance to Metro Station 2 Minutes

Delivery date 2025





**FIDAN**  
PROPERTY



# Price list & Payment method

## 2+1

103 - 117 m2

Starting From 270.000 \$

## 3+1

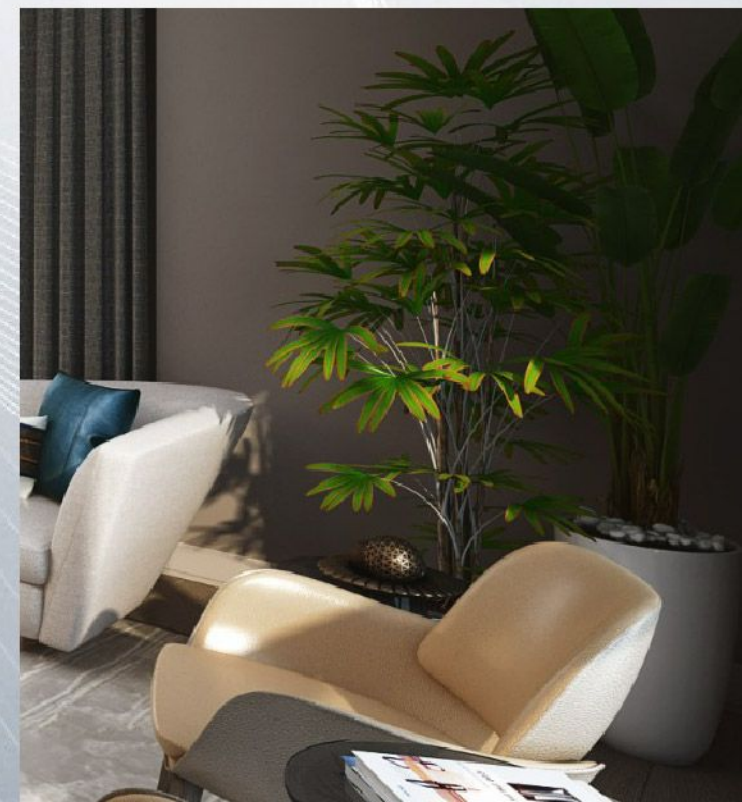
130 - 145 m2

Starting From 360.000 \$

## 4+1

190 - 315 m2

Starting From 470.000 \$



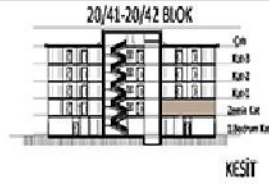
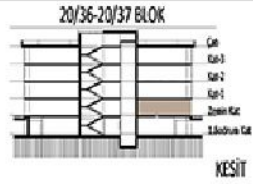


## TİP 2+1A Tip 02 DAİRE FÖYÜ

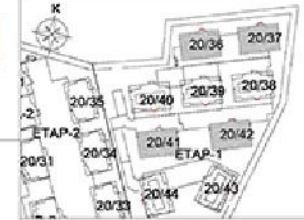
BAĞIMSIZ BÖLÜM NUMARALARI

20/36-20/37 BLOK: 04

20/41-20/42 BLOK: 07



20/36-37-41-42 BLOK  
ANAHTAR PLAN



### DAİRE 2+1A TİP 02

1 GİRİŞ HOLLÜ	6.87 m <sup>2</sup>
2 SALON +MUTFAK	35.62 m <sup>2</sup>
3 KORİDOR	3.65 m <sup>2</sup>
4 E.YATAK ODASI	14.26 m <sup>2</sup>
5 E.BANYO	3.81 m <sup>2</sup>
6 YATAK ODASI	12.42 m <sup>2</sup>
7 ORTAK BANYO	3.49 m <sup>2</sup>
8 İŞLİK	2.16 m <sup>2</sup>
9 TAHSİSİLİ TERAS	21.35 m <sup>2</sup>

NET ALAN (tahsisli teras hariç)	82.29 m <sup>2</sup>
NET ALAN	103.64 m <sup>2</sup>
BRÜT ALAN (tahsisli teras hariç)	95.76 m <sup>2</sup>



## TİP 3+1A Tip 01 DAİRE FÖYÜ

### BAĞIMSIZ BÖLÜM NUMARALARI

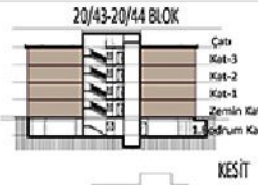
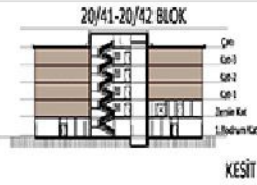
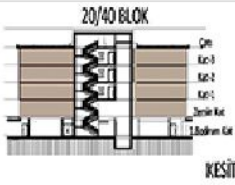
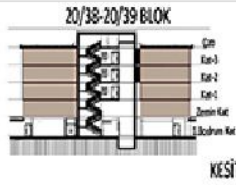
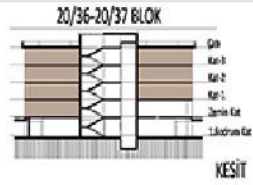
20/36-20/37 BLOK: 02, 06, 08, 10, 12, 14, 16

20/38-20/39 BLOK: 02, 04, 06, 08, 10, 12, 14, 16

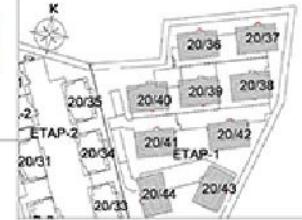
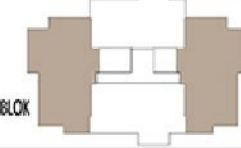
20/40 BLOK: 02, 04, 06, 08, 10, 12, 14, 16

20/41-20/42 BLOK: 05, 11, 13, 15, 17, 19

20/43-20/44 BLOK: 02, 04, 06, 08, 10, 12, 14, 16



20/36-37-38-39-40-41-42-43-44 BLOK  
ANAHTAR PLAN



### DAİRE 3+1A TİP 01

1 GİRİŞ HOLLÜ	7.15 m <sup>2</sup>
2 MUTFAK	11.92 m <sup>2</sup>
3 SALON	31.49 m <sup>2</sup>
4 KORİDOR	5.05 m <sup>2</sup>
5 E.YATAK ODASI	17.47 m <sup>2</sup>
6 E.BANYO	3.57 m <sup>2</sup>
7 YATAK ODASI	11.3 m <sup>2</sup>
8 YATAK ODASI	11.29 m <sup>2</sup>
9 ORTAK BANYO	5.07 m <sup>2</sup>
10 İŞLİK	1.13 m <sup>2</sup>
11 BALKON	6.13 m <sup>2</sup>

NET ALAN (balkonsuz)	105.45 m <sup>2</sup>
NET ALAN	111.58 m <sup>2</sup>
BRÜT ALAN	127.31 m <sup>2</sup>

# FIDAN PROPERTY









# Social Facilities

**GYM**

**Green Areas**

**Sport Courts**

**Kids Playground**

**Parking**

**Security System**





## Project Location

Sabiha Airport : 13 km

Marmara Sea : 2.5 km

Metro Station : 300 m

Taksim : 35 km

Eminönü : 38 km

Nearest Mall : 3 km

Nearest Hospital : 1 km



Pendik

Güzelyalı

Samandıra

Sultanbeyli

Kurna

Kadıköy

Burgazadası

D-1

D100

D100

E80

D016

D-6

D-6

D-7

E80

# FIDAN PROPERTY





 +90 552 866 55 57

 [info@fidanproperty.com](mailto:info@fidanproperty.com)

 [www.fidanproperty.com](http://www.fidanproperty.com)