

An aerial photograph of a modern, multi-story apartment complex at dusk. The building features a mix of grey and blue facades with numerous balconies and large windows. Some windows are illuminated from within, and some balconies have glass railings. In the foreground, there is a parking area with a few cars and a small commercial building with a sign that says "SEASIDE COFFEE". The background shows a dark sky and distant hills. A logo consisting of a stylized building icon in gold and white is overlaid on the center of the image.

FIDAN
PROPERTY

FI 672

General Information

Location Istanbul – Bağcılar

Number of apartments 216

Apartment type 1+1 - 2+1 - 3+1 - 3+1D - 4+1D

Price Starting from 295.000 \$

Area 64 - 309 m2

Distance to Taksim 30 Minutes

Distance to Istanbul Airport 30 Minutes

Distance to Metro Station 8 Minutes

Delivery date 07 / 2024



FIDAN PROPERTY



Price list & Payment method

1+1

2+1

3+1

3+1D

4+1D

64 - 91 m2

100 - 257 m2

157 - 224 m2

222 - 225 m2

297 - 309 m2

220.000 - 332.000 \$

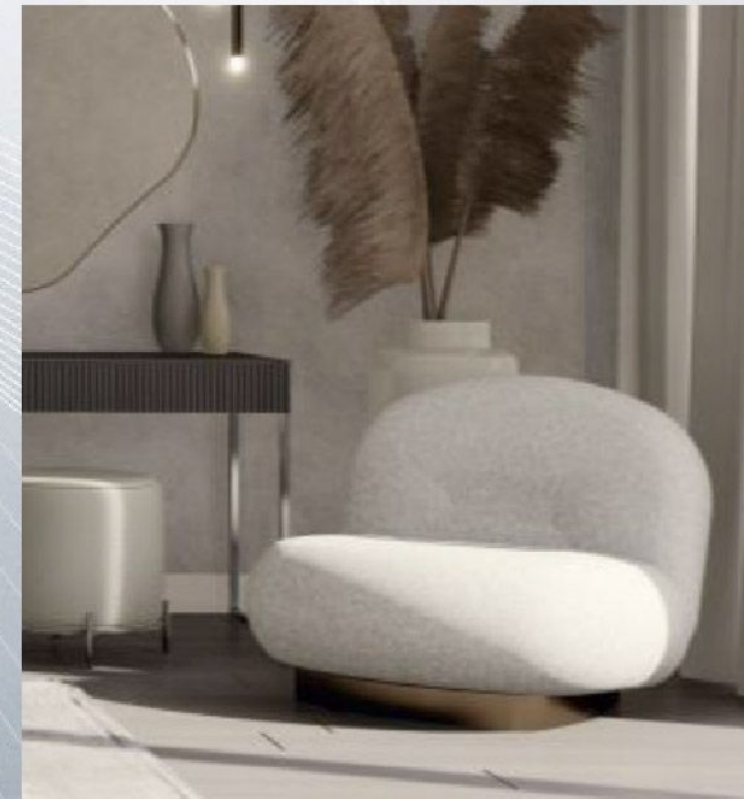
343.000 - 887.000 \$

464.000 - 643.000 \$

692.000 - 700.000 \$

924.000 - 985.000 \$

50 % Down Payment 12 Months Installment



FIDAN
PROPERTY



Floor Plans:



A Block

4+1 Duplex

Min - Max

289.66m² - 300.51m²



B Block

1+1

Min - Max

62.98m² - 89.23m²



B Block

2+1

Min - Max

93.99m² - 250.73m²

Floor Plans:

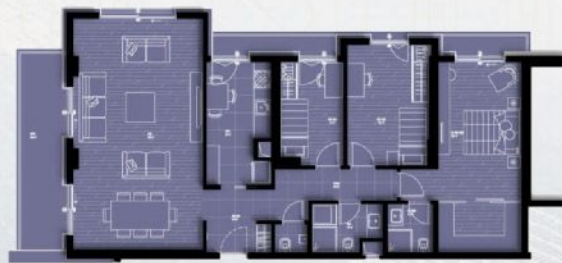


A Block

2+1

Min - Max

93.99m²- 250.73m²

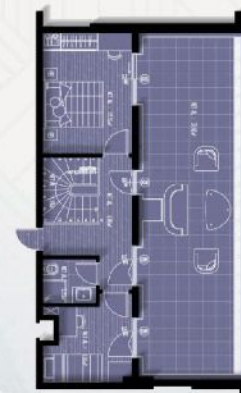


A Block

3+1

Min - Max

153.04m² - 178.07m²



A Block

3+1 Duplex

Min - Max

216.36m² - 218.87m²



FIDAN PROPERTY



Green Areas

Swimming Pool

Kids Playground

Social Facilities

Walking Paths

Gym

Parking

Security System



Istanbul Airport : 32 km

Marmara Sea : 10 km

Metro Station : 3 km

Taksim : 24 km

Eminönü : 20 km

Nearest Mall : 1.5 km

Nearest Hospital : 2 km

Project Location



SOSYAL TESİS





FIDAN
PROPERTY





 +90 552 866 55 57

 info@fidanproperty.com

 www.fidanproperty.com