

A family of four is enjoying a rooftop terrace. A man in a white t-shirt and blue jeans stands on the left, embracing a woman in a blue and white striped dress who is sitting at a dining table. The table is set with a white tablecloth, a teapot, and plates of food. To the right, a woman in a white shirt and sunglasses sits on a white sofa with a young child. A coffee table in front of the sofa holds a laptop, a glass of water, a cup of coffee, and a plate of pastries. The terrace has a wooden deck, potted plants, and a view of a city skyline and a body of water in the background.

**FIDAN**  
PROPERTY

FI 667



# General Information

Location Istanbul – Kartal

Number of apartments 116

Apartment type 2+1 - 3+1 - 4+1 - 5+1

Price Starting from 7.553.000 TL

Area 87 – 214 m2

Distance to Taksim 60 Minutes

Distance to Sabiha Airport 22 Minutes

Distance to Metro Station 10 Minutes

Delivery date 03 / 2025





# FIDAN PROPERTY





# Price list & Payment method

## 2+1

## 3+1

## 4+1

## 5+1

87 - 100 m<sup>2</sup>

111 - 147 m<sup>2</sup>

146 m<sup>2</sup>

211 - 214 m<sup>2</sup>

7.553.000 - 9.140.000 TL

11.700.000 - 12.590.000 TL

12.293.000 - 12.590.000 TL

18.070.000 - 20.736.000 TL

## 6 / 12 Months Installment













# A BLOK

## 3+1

BAĞIMSIZ BÖLÜM NO:

2

BALKON DAHİL NET ALAN: 81,55 m<sup>2</sup>

BRÜT ALAN: 111,64 m<sup>2</sup>

SALON: 24,00 m<sup>2</sup>

MUTFAK: 9,00 m<sup>2</sup>

YATAK ODASI-1: 10,00 m<sup>2</sup>

YATAK ODASI-2: 8,50 m<sup>2</sup>

EBV. YATAK ODASI: 16,00 m<sup>2</sup>

EBV. BANYO: 2,38 m<sup>2</sup>

BANYO: 4,00 m<sup>2</sup>

ANTRE: 3,50 m<sup>2</sup>

HOL: 4,17 m<sup>2</sup>

BAHÇE KULLANIMI: 24,00 m<sup>2</sup>

OTOPARK: 1 adet



13. KAT  
12. KAT  
11. KAT  
10. KAT  
9. KAT  
8. KAT  
7. KAT  
6. KAT  
5. KAT  
4. KAT  
3. KAT  
2. KAT  
1. KAT  
ZEMİN KAT  
1. BİNA KAT  
2. BİNA KAT



11. KAT  
10. KAT  
9. KAT  
8. KAT  
7. KAT  
6. KAT  
5. KAT  
4. KAT  
3. KAT  
2. KAT  
1. KAT  
ZEMİN KAT  
1. BİNA KAT  
2. BİNA KAT

\*Görseller uygulamada farklılık gösterebilir.



# A BLOK

## 4+1

BAĞIMSIZ BÖLÜM NO:

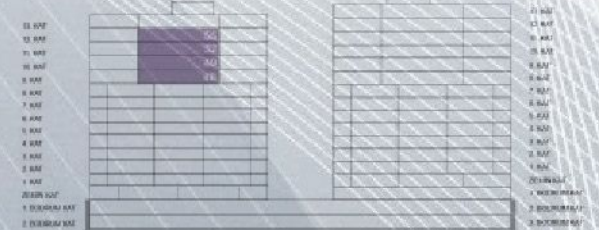
46, 49, 52, 55

BALKON DAHİL NET ALAN: 110,86 m<sup>2</sup>

BRÜT ALAN: 146,87 m<sup>2</sup>

SALON: 30,00 m<sup>2</sup>  
MUTFAK: 11,00 m<sup>2</sup>  
YATAK ODASI-1: 10,00 m<sup>2</sup>  
YATAK ODASI-2: 9,00 m<sup>2</sup>  
YATAK ODASI-3: 9,00 m<sup>2</sup>  
EBV. YATAK ODASI: 16,00 m<sup>2</sup>  
EBV. BANYO: 3,23 m<sup>2</sup>  
BANYO: 4,30 m<sup>2</sup>  
ANTRE: 7,34 m<sup>2</sup>  
HOL: 5,75 m<sup>2</sup>  
BALKON: 5,24 m<sup>2</sup>

OTOPARK: 1 adet



\*Görseller uygulamada farklılık gösterebilir.



# A BLOK

## 5+1 DUBLEKS



ALT KAT PLANI



ÜST KAT PLANI

BAĞIMSIZ BÖLÜM NO:

58

BALKON DAHİL NET ALAN: 183,43 m<sup>2</sup>

BRÜT ALAN: 211,65 m<sup>2</sup>

ALT KAT

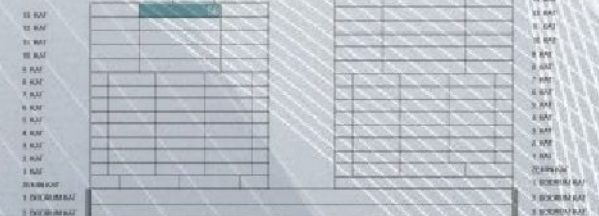
SALON: 30,00 m<sup>2</sup>  
MUTFAK: 11,50 m<sup>2</sup>  
YATAK ODASI-1: 10,00 m<sup>2</sup>  
YATAK ODASI-2: 12,13 m<sup>2</sup>  
EBV. YATAK O.: 17,17 m<sup>2</sup>  
EBV. BANYO: 4,00 m<sup>2</sup>  
BANYO: 5,30 m<sup>2</sup>  
ANTRE: 6,42 m<sup>2</sup>  
HOL: 9,37 m<sup>2</sup>  
KILER: 1,44 m<sup>2</sup>  
BALKON: 5,24 m<sup>2</sup>

ÜST KAT

ODA: 20,00 m<sup>2</sup>  
EBV. YATAK O.: 21,00 m<sup>2</sup>  
BANYO: 5,50 m<sup>2</sup>  
SAUNA: 2,00 m<sup>2</sup>  
TERAS: 22,36 m<sup>2</sup>

OTOPARK:

2 adet



\*Görseller uygulamada farklılık gösterebilir.



# FIDAN PROPERTY





## Social Facilities

Cafe

Green Areas

Swimming Pool

Sport Courts

Parking

Security System











**FIDAN**  
PROPERTY

## Project Location

Sabiha Airport : 10 km

Marmara Sea : 5.5 km

Metro Station : 3.5 km

Taksim : 34 km

Eminönü : 38 km

Nearest Mall : 4 km

Nearest Hospital : 1.5 km

Burgazadası

Adalar

Pendik

Güzel

İstanbul

Samandıra

Ataşehir

Sultanbey

EBO

D016

O-1

O-6

D100

D100



# FIDAN PROPERTY







 +90 552 866 55 57

 [info@fidanproperty.com](mailto:info@fidanproperty.com)

 [www.fidanproperty.com](http://www.fidanproperty.com)