

The image shows a two-story apartment building facade at night. The building has a light-colored horizontal siding and dark window frames. Each window unit has a small balcony with a black metal railing. The windows are lit from within, showing some interior details like curtains and furniture. In the center of the image, there is a logo for 'FIDAN PROPERTY'. The logo consists of a stylized yellow building icon to the left of the word 'FIDAN' in a bold, yellow, sans-serif font. Below 'FIDAN' is the word 'PROPERTY' in a white, sans-serif font.

**FIDAN**  
PROPERTY

**FI 634**



# General Information

Location Istanbul – Kağıthane

Number of apartments 72

Apartment type 2+1

Price Starting from 544.900 \$

Area 126 – 128 m2

Distance to Taksim 20 Minutes

Distance to Istanbul Airport 28 Minutes

Distance to Metro Station 5 Minutes

Delivery date 12 / 2024







**FIDAN**  
PROPERTY





# Price list & Payment method

## 2+1

126 - 128 m<sup>2</sup>

544.900 - 701.100 \$





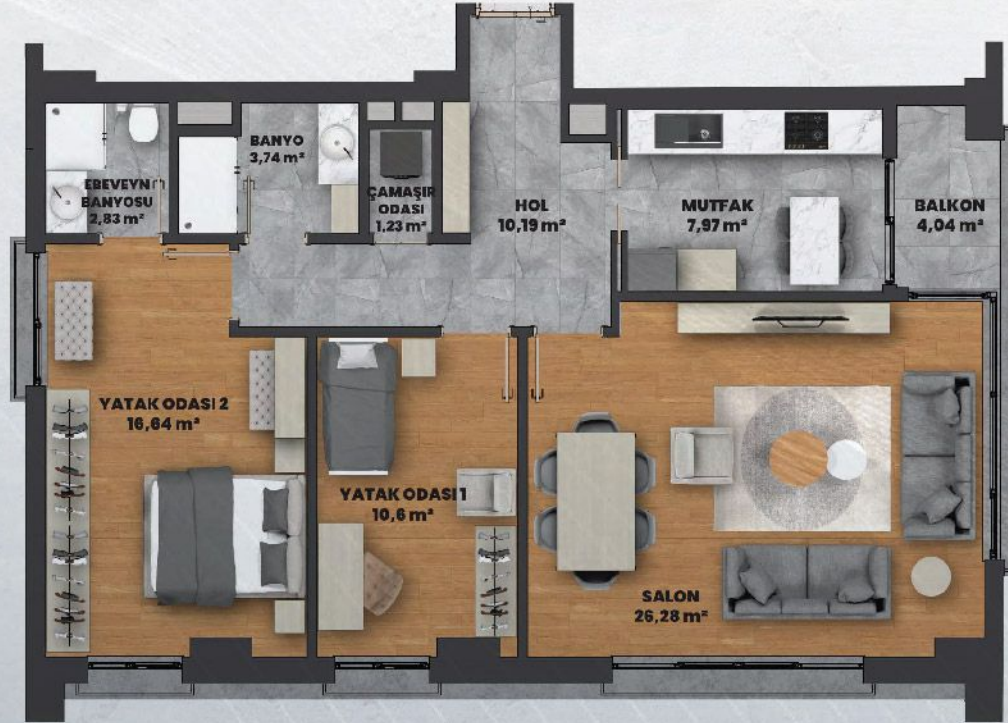
**FIDAN**  
PROPERTY





# 2+1 B

ZEMİN - 1-2-3-4-5-6-7 ve 8. Katlar



SALON	26,28 m <sup>2</sup>
MUTFAK	7,97 m <sup>2</sup>
YATAK ODASI 1	10,6 m <sup>2</sup>
YATAK ODASI 2	16,64 m <sup>2</sup>
EBEVEYN BANYOSU	2,83 m <sup>2</sup>
BANYO	3,74 m <sup>2</sup>
ÇAMAŞIR ODASI	1,23 m <sup>2</sup>
HOL	10,19 m <sup>2</sup>
BALKON	4,04 m <sup>2</sup>



NET M<sup>2</sup>  
**83,52 m<sup>2</sup>**  
BRÜT M<sup>2</sup>  
**128,49 m<sup>2</sup>**



# 2+1 A

ZEMİN - 1-2-3-4-5-6-7 ve 8. Katlar



SALON	26,34 m <sup>2</sup>
MUTFAK	8,85 m <sup>2</sup>
YATAK ODASI 1	9,99 m <sup>2</sup>
YATAK ODASI 2	13,47 m <sup>2</sup>
EBEVEYN BANYOSU	3,90 m <sup>2</sup>
BANYO	3,62 m <sup>2</sup>
ÇAMAŞIR ODASI	1,24 m <sup>2</sup>
HOL	9,91 m <sup>2</sup>
BALKON	4,65 m <sup>2</sup>



NET M<sup>2</sup>  
**81,97 m<sup>2</sup>**  
BRÜT M<sup>2</sup>  
**126,11 m<sup>2</sup>**



**FIDAN**  
PROPERTY













## Social Facilities

Green Areas

GYM

Kids Playground

Parking

Security System









## Project Location

Istanbul Airport : 32 km

Cebeci

The Bosphorus: 10 km

Metro Station : 2.5 km

Taksim : 11 km

Eminönü : 13 km

Nearest Mall : 2 km

Nearest Hospital : 2 km

D020

E80

D-1

BEŞİKTAŞ

D-7

E5

E5

D100

D-1

lar

Başakşehir

Alibeykoy

Maslak

Arnavutköy

Fatih

Üsküdar

İstanbul

Zeytinburnu



**FIDAN**  
PROPERTY







 +90 552 866 55 57

 [info@fidanproperty.com](mailto:info@fidanproperty.com)

 [www.fidanproperty.com](http://www.fidanproperty.com)