

The logo for FIDAN PROPERTY features a stylized golden icon of a building with three vertical bars of varying heights on the left. To the right of the icon, the word "FIDAN" is written in a bold, golden, sans-serif font, and the word "PROPERTY" is written below it in a white, sans-serif font.

**FIDAN**  
PROPERTY

FI 629



# General Information

Location Istanbul – Eyup

Number of apartments 274

Apartment type 1+1 - 2+1 - 2.5+1

Price Starting from 538.000 \$

Area 80 – 209 m2

Distance to Taksim 39 Minutes

Distance to Istanbul Airport 22 Minutes

Distance to E80 Highway 14 Minutes

Delivery date 12 / 2025



# FIDAN PROPERTY



# Price list & Payment method

## 1+1

80 - 105 m<sup>2</sup>

538.000 - 795.071 \$

## 2+1

112 - 209 m<sup>2</sup>

739.000 - 1.285.477 \$





# D-G BLOK (1+1)

\*1. BODRUM KAT-ZEMİN KAT-1.KAT-2.KAT-3.KAT

\*\* D BLOK 1.KAT NO:22



1+1

NET:

1. SALON+MUTFAK:	25,72 m <sup>2</sup>
2. ANTRE:	2,69 m <sup>2</sup>
3. YATAK ODASI:	14,45 m <sup>2</sup>
4. GİYİNME ODASI:	3,76 m <sup>2</sup>
5. BANYO:	2,99 m <sup>2</sup>
6. WC:	2,04 m <sup>2</sup>
7. ÇAMAŞIR ODASI/DOLABI:	1,23 m <sup>2</sup>

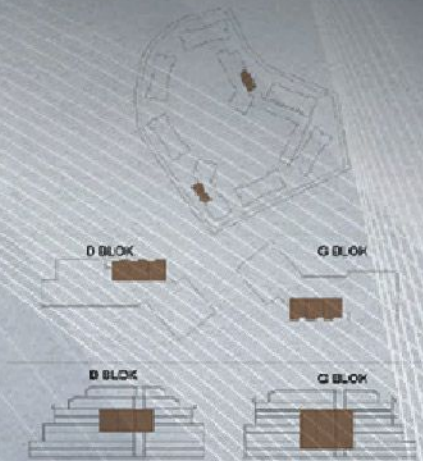
KAPALI NET ALAN: 52,88 m<sup>2</sup>

-BALKON: 4,80 m<sup>2</sup>

SATIŞA ESAS BRÜT ALAN: 80,36-83,26 m<sup>2</sup>

-DEPO TAHSİS: 5,70 m<sup>2</sup>

BRÜT KULLANIM ALANI: 85,29-95,03 m<sup>2</sup>



# A-B-C-E1-E2-F BLOK (2+1\_A1\_3)

\*2.BODRUM KAT - 1.BODRUM KAT - ZEMİN KAT

\*\* A BLOK 2. BODRUM KAT NO:3



2+1\_A1\_3

NET:

1.SALON+MUTFAK:	32,03 m <sup>2</sup>
2.ANTRÉ:	5,72 m <sup>2</sup>
3.KORİDOR:	5,06 m <sup>2</sup>
4.EBV. YATAK ODASI:	13,30 m <sup>2</sup>
5.GİYİNME ODASI:	2,72 m <sup>2</sup>
6.YATAK ODASI:	11,74 m <sup>2</sup>
7. EBV. BANYO:	3,60 m <sup>2</sup>
8. ÇAMAŞIR ODASI/DOLABI:	1,44 m <sup>2</sup>
9. BANYO:	3,28 m <sup>2</sup>

KAPALI NET ALAN: 78,89 m<sup>2</sup>

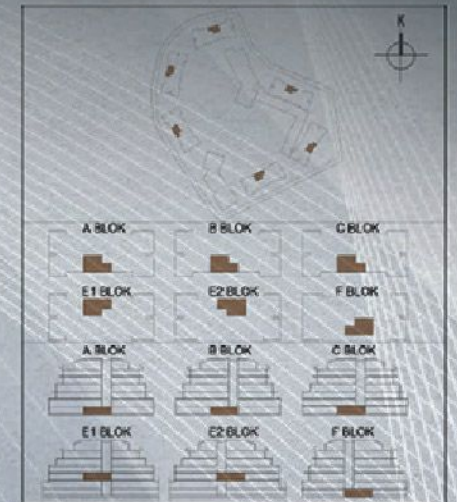
-VERANDA: 32,75 m<sup>2</sup>

SATIŞA ESAS BRÜT ALAN: 135,04-138,44 m<sup>2</sup>

-BAHÇE (ŞEREFİYELİK): 50,31-137,30m<sup>2</sup>

-DAİRE DIŞI EKLENTİ: 10,46 m<sup>2</sup>

BRÜT KULLANIM ALANI: 199,14-281,28 m<sup>2</sup>



# A-B-E1-E2-F BLOK (2,5+1\_D)

\*ZEMİN KAT- 2.KAT

\*\*A BLOK ZEMİN KAT NO:8



2,5+1\_D

NET:

1.SALON:	30,80 m <sup>2</sup>
2.ANTRÉ:	7,43 m <sup>2</sup>
3.KORİDOR:	3,34 m <sup>2</sup>
4.MUTFAK:	11,94 m <sup>2</sup>
5.EBV. YATAK ODASI:	13,61 m <sup>2</sup>
6.GİYİNME ODASI:	3,90 m <sup>2</sup>
7.YATAK ODASI:	12,12 m <sup>2</sup>
8.ÇALIŞMA ODASI:	6,62 m <sup>2</sup>
9.EBV. BANYO:	3,36 m <sup>2</sup>
10.BANYO:	3,37 m <sup>2</sup>
11.ÇAMAŞIR ODASI/DOLABI:	0,60 m <sup>2</sup>

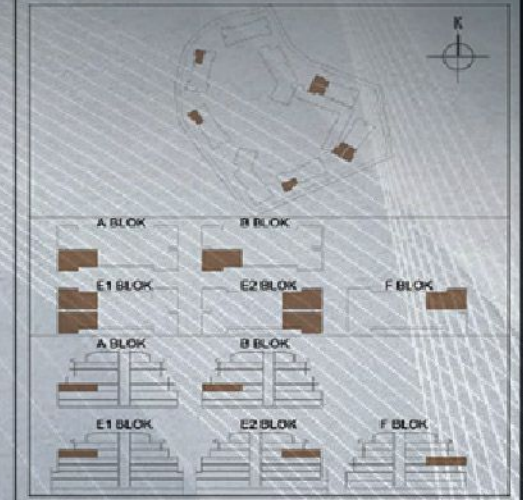
KAPALI NET ALAN: 97,09 m<sup>2</sup>

-TERAŞ: 29,21 m<sup>2</sup>

SATIŞA ESAS BRÜT ALAN: 155,76-159,73 m<sup>2</sup>

-DEPO TAHSİS: 6,23 m<sup>2</sup>

BRÜT KULLANIM ALANI: 163,93-165,96 m<sup>2</sup>









## Social Facilities

Green Areas

Kids Playground

Swimming Pool

Sauna

Turkish Bath

GYM

Parking

Security System

# FIDAN PROPERTY



## Project Location

Istanbul Airport : 21 km

Golden Horn : 18 km

Metro Station : 300 m

Taksim : 25 km

Eminönü : 26 km

Nearest Mall : 16 km

Nearest Hospital : 3 km



Göktürk  
Merkez

Fatih Ormanı

Yayla

Cebeci

Başakşehir

ŞİMURGAZ

TUNA  
MAHALLESİ

AVRUPA YAKASI

Küçükçekmece

Zeytinburnu

AVCILAR

ATAKÖY

İstanbul





 +90 552 866 55 57

 [info@fidanproperty.com](mailto:info@fidanproperty.com)

 [www.fidanproperty.com](http://www.fidanproperty.com)