



**FIDAN**  
PROPERTY

FI 618

STANDARD CITY RESIDENCE

# General Information

Location Istanbul – Bahçelievler

Number of apartments 50

Apartment type 2+1

Price Starting from 210.000 \$

Area 96 m2

Distance to Taksim 39 Minutes

Distance to Istanbul Airport 35 Minutes

Distance to Metro Station 6 Minutes

Delivery date 03 / 2024





**FIDAN**  
PROPERTY



# Price list & Payment method

## 2+1

96 m2

210.000 - 230.000 \$

**50 % Down Payment 12 Months Installment**



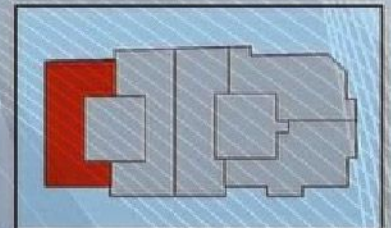
# FIDAN PROPERTY





DAİRE BÖLÜMÜ	ALAN (m <sup>2</sup> )
SALON	21,32 m <sup>2</sup>
MUTFAK	10,10 m <sup>2</sup>
BALKON	2,14 m <sup>2</sup>
ODA-1	14,15 m <sup>2</sup>
ODA-2	10,60 m <sup>2</sup>
BANYO	5,15 m <sup>2</sup>
ANTRE	7,15 m <sup>2</sup>
<b>BRÜT KAT KULLANIM ALANI</b>	<b>96 m<sup>2</sup></b>
<b>BRÜT SİTE KULLANIM ALANI</b>	<b>136 m<sup>2</sup></b>

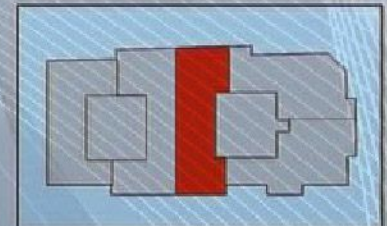
## TİP-1 DAİRE





DAİRE BÖLÜMÜ	ALAN (m <sup>2</sup> )
SALON	20,40 m <sup>2</sup>
MUTFAK	11,65 m <sup>2</sup>
BALKON	2,66 m <sup>2</sup>
ODA-1	15,05 m <sup>2</sup>
ODA-2	9,25 m <sup>2</sup>
BANYO	5,27 m <sup>2</sup>
ANTRE	6,55 m <sup>2</sup>
<b>BRÜT KAT KULLANIM ALANI</b>	<b>96 m<sup>2</sup></b>
<b>BRÜT SİTE KULLANIM ALANI</b>	<b>136 m<sup>2</sup></b>

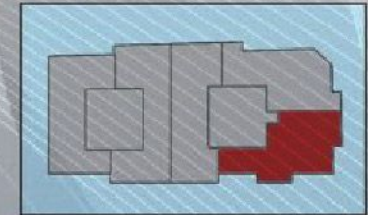
## TİP-3 DAİRE





DAİRE BÖLÜMÜ	ALAN (m <sup>2</sup> )
SALON	21,40 m <sup>2</sup>
MUTFAK	9,15 m <sup>2</sup>
BALKON	1,80 m <sup>2</sup>
ODA-1	14,10 m <sup>2</sup>
ODA-2	11,65 m <sup>2</sup>
BANYO	5,90 m <sup>2</sup>
ANTRE	6,75 m <sup>2</sup>
BRÜT KAT KULLANIM ALANI	96 m <sup>2</sup>
BRÜT SİTE KULLANIM ALANI	136 m <sup>2</sup>

## TIP-5 DAİRE







## Social Facilities

Green Areas

Parking

Security System



**FIDAN**  
PROPERTY



## Project Location

Istanbul Airport : 38 km

Marmara Sea : 6 km

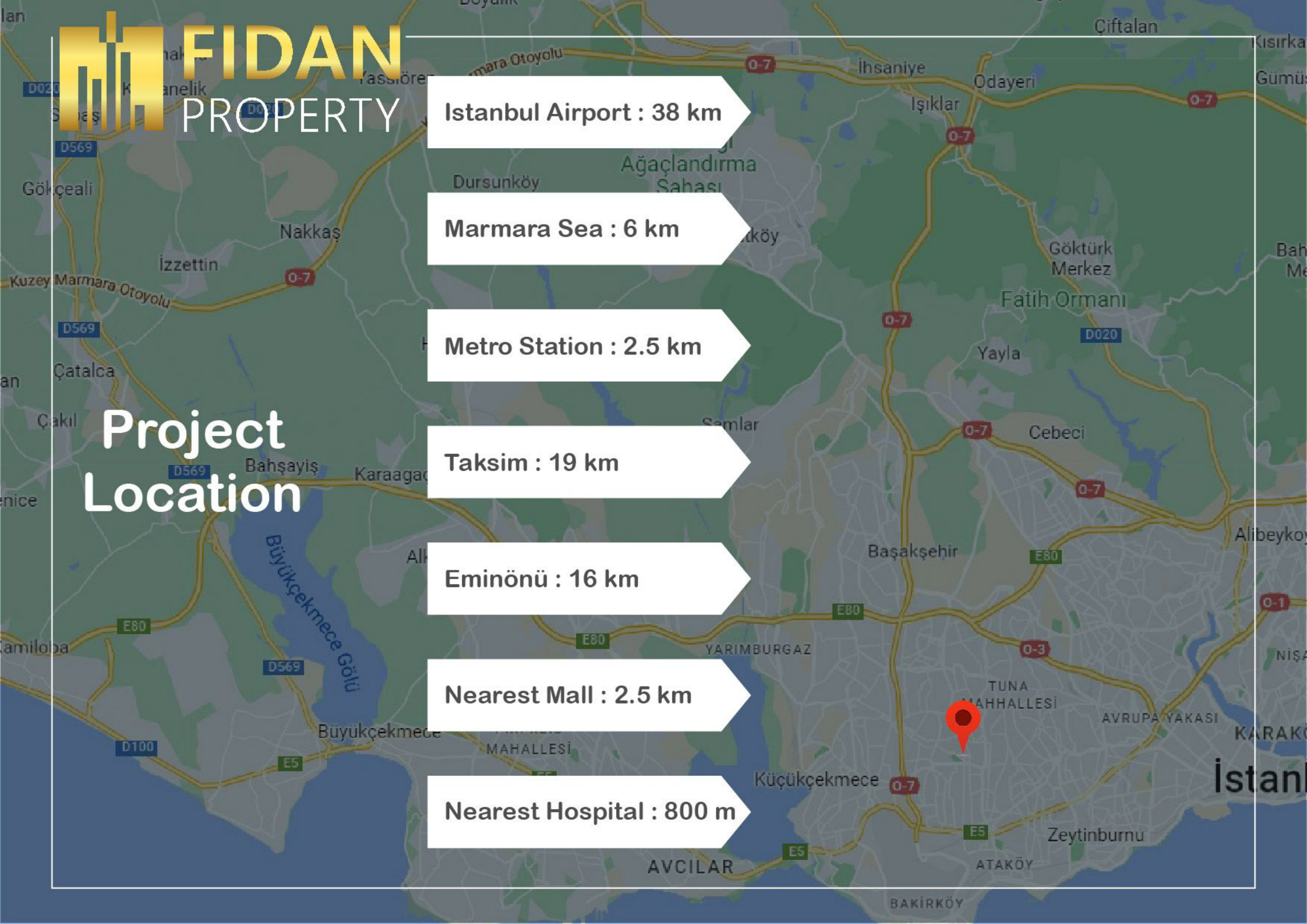
Metro Station : 2.5 km

Taksim : 19 km

Eminönü : 16 km

Nearest Mall : 2.5 km

Nearest Hospital : 800 m





# FIDAN PROPERTY





The logo features a stylized, golden silhouette of a city skyline with several buildings of varying heights. To the right of this icon, the word "FIDAN" is written in a large, bold, golden sans-serif font, and the word "PROPERTY" is written below it in a smaller, white, sans-serif font.

**FIDAN**  
PROPERTY

 +90 552 866 55 57

 [info@fidanproperty.com](mailto:info@fidanproperty.com)

 [www.fidanproperty.com](http://www.fidanproperty.com)