

An aerial night view of a city, likely Istanbul, showing a dense urban landscape with numerous buildings and lights. The sky is dark with some clouds and a few birds in flight. In the center, a modern, multi-story building with a curved facade and balconies is highlighted. The building has a distinctive design with a central tower and a curved base. The text 'FIDAN PROPERTY' is overlaid on the image in a bold, gold and white font. The word 'FIDAN' is in gold, and 'PROPERTY' is in white. To the left of the text is a stylized gold logo consisting of vertical bars of varying heights, resembling a bar chart or a city skyline.

FIDAN
PROPERTY

FI 612

General Information

Location Istanbul – Beşiktaş

Number of apartments 48

Apartment type 2+1 - 3+1

Price Starting from 40.000.000 TL

Area 101 - 184 m2

Distance to Taksim 12 Minutes

Distance to Istanbul Airport 38 Minutes

Distance to Metro Station 4 Minutes

Delivery date 07 / 2025





Price list & Payment method

2+1

101 - 135 m2

40.000.000 - 68.000.000 TL

3+1

165 - 184 m2

68.000.000 - 109.500.000 TL

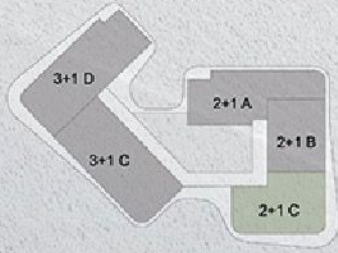
45 % Down Payment 18 Months Installment



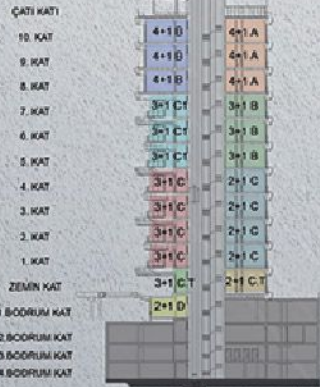


BEŞİKTAŞ DİKİLİTAŞ
1646/55 PARSEL
2+1 C

ANAHTAR KAT PLANI



ANAHTAR KEŞİT



ANAHTAR VAZİYET PLANI

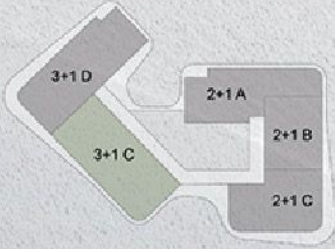


1 Giriş Holü	6.28 m ²
2 Salon	24.08 m ²
3 Mutfak	11.63 m ²
4 Oda 1	9.94 m ²
5 E. Yatak Odası	12.94 m ²
6 E. Banyo	3.49 m ²
7 Banyo	3.86 m ²
8 Çamaşır Odası	1.12 m ²
9 Koridor	3.61 m ²

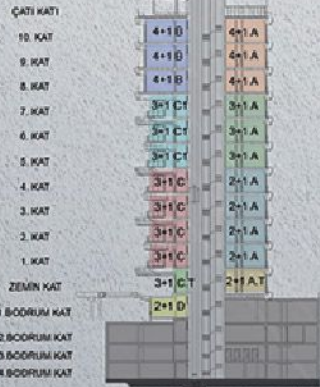
Net Alan (Balkon Hariç)	76.95 m ²
Balkon	9.49 m ²
Satışa Esas Brüt Alan	121.57 m ²

BEŞİKTAŞ DİKİLİTAŞ
1646/55 PARSEL
3+1 C

ANAHTAR KAT PLANI



ANAHTAR KESİT



ANAHTAR VAZİYET PLANI

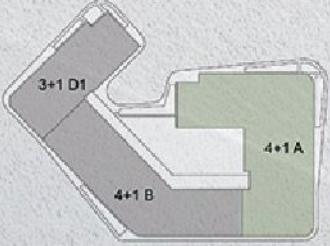


1 Giriş Holü	6.63 m ²
2 Salon	31.08 m ²
3 Mutfak	12.63 m ²
4 Oda 1	11.81 m ²
5 Oda 2	10.56 m ²
6 E. Yatak Odası	20.85 m ²
7 E. Banyo	3.92 m ²
8 Banyo	4.62 m ²
9 Çamaşır Odası	2.45 m ²
10 Koridor	6.18 m ²

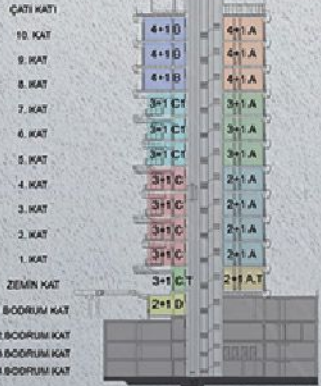
Net Alan (Balkon Hariç)	110.73 m ²
Balkon	12.38 m ²
Satışa Esas Brüt Alan	170.60 m ²

BEŞİKTAŞ DİKİLİTAŞ
1646/55 PARSEL
4+1 A

ANAHTAR KAT PLANI



ANAHTAR KEŞİT



ANAHTAR VAZİYET PLANI



1 Giriş Holü	8.19 m ²
2 Vestiyer	3.67 m ²
3 Salon	49.91 m ²
4 Mutfak	21.01 m ²
5 Oda 1	14.11 m ²
6 Oda 2	16.92 m ²
7 Oda 3	20.26 m ²
8 E.Yatak Odası	38.95 m ²
9 E. Banyo	7.88 m ²
10 Banyo 1	4.47 m ²
11 Banyo 2	5.68 m ²
12 Banyo 3	4.11 m ²
13 Wc	3.65 m ²
14 Çamaşır Odası	7.97 m ²
15 Kiler	3.31 m ²
16 Koridor	17.83 m ²

Net Alan (Balkon Hariç)	227.92 m ²
Balkon	25.65 m ²
Satışa Esas Brüt Alan	343.87 m ²



FIDAN
PROPERTY





Social Facilities

Terrace

Cafe

Swimming Pool

GYM

Sauna

Parking

Security System





FIDAN
PROPERTY



Project Location

Istanbul Airport : 43 km

Bosphorus Bridge : 3 km

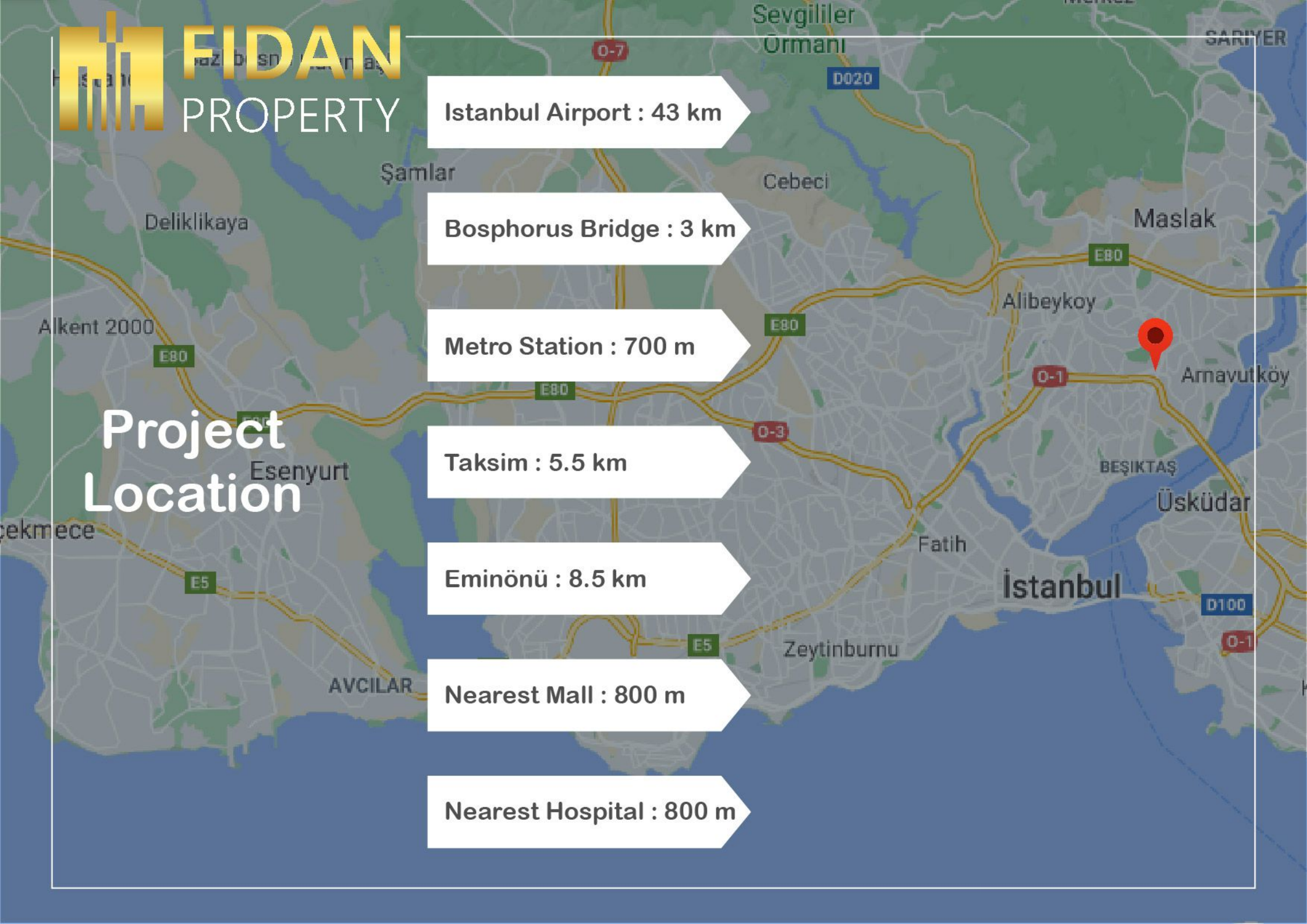
Metro Station : 700 m

Taksim : 5.5 km

Eminönü : 8.5 km

Nearest Mall : 800 m

Nearest Hospital : 800 m







 +90 552 866 55 57

 info@fidanproperty.com

 www.fidanproperty.com