

A modern, two-story house with a swimming pool and a fence. The house features a dark exterior with large windows and a prominent overhang. The pool is in the foreground, and a fence runs along the side of the property. The sky is clear and blue.

 **FIDAN**
PROPERTY

FI 559

General Information

Location Istanbul – Silivri

Number of apartments 84

Apartment type Villas

Price Starting from 15.180.000 TL

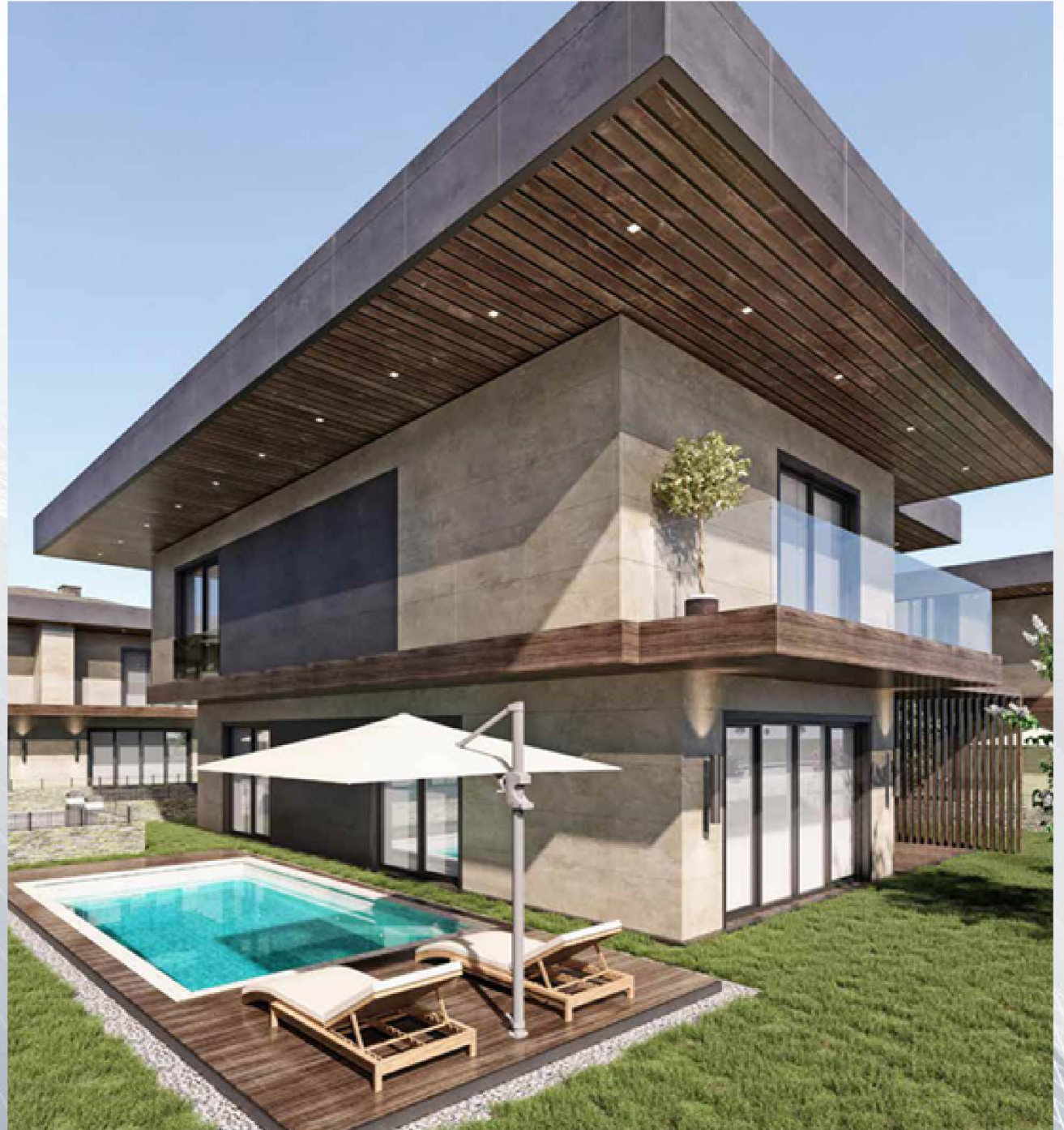
Area 506 – 735 m2

Distance to Taksim 60 Minutes

Distance to Istanbul Airport 40 Minutes

Distance to Metrobus Station 20 Minutes

Delivery date 06 / 2024





Price list & Payment method

Villa 5+1

506 - 735 m2

15.180.000 - 22.063.000 TL





5+1 A TIPLİ VİLLA

Brüt Alan: 298,71m²

Bahçe Dahil Brüt: 618,71m²

ZEMİN KAT PLANI

1. hol/ hall:	15,79m ²
2. Mutfak/ kitchen:	19,75m ²
3. salon/ saloon:	40,8m ²
4. oturma odası/ living room:	13,4m ²
5. Vestiyer/ cloakroom:	5,9m ²
6. teknik oda/ technical room:	2,32m ²
7. wc:	4,15m ²

· Zemin terası/ terrace:	9,8m ²
· Havuz/ pool:	24,5m ²

1. KAT PLANI

1. hol/ hall:	8,55m ²
2. yatak odası/ bedroom:	15,25m ²
3. çamaşır odası/ utility room:	2,2m ²
4. yatak odası/ bedroom:	14,5m ²
5. banyo/ bathroom:	4,2m ²
6. e. yatak odası/ master bedroom:	20,5m ²
7. giyinme odası/ dressing room:	8,2m ²
8. e. banyo/ parent's bathroom:	4,2m ²
9. banyo/ bathroom:	6,4m ²
10. yatak odası/ bedroom:	18m ²
11. banyo/ bathroom:	3,7m ²
12. balkon/ balcony:	8,02m ²
13. Balkon/ balcony:	4,25m ²



5+1 B tipi (ikiiz) villa

Brüt Alan: 284,91m²

Bahçe Dahil Brüt: 604,91m²

ZEMİN KAT PLANI

1. hol/ hall:	15,79m ²
2. Mutfak/ kitchen:	25,2m ²
3. salon/ saloon:	40,8m ²
4. oturma odası/ living room:	13,4m ²
5. Vestiyer/ cloakroom:	5,9m ²
6. teknik oda/ technical room:	2,32m ²
7. wc:	4,15m ²

- Zemin terası/
terrace: 4,25m²
- Havuz/ pool: 24,5m²

1. KAT PLANI

1. hol/ hall:	8,3m ²
2. yatak odası/ bedroom:	15,25m ²
3. banyo/ bathroom:	3,13m ²
4. çamaşır odası/ utility room:	2,2m ²
5. yatak odası/ bedroom:	18m ²
6. banyo/ bathroom:	3m ²
7. e. yatak odası/ master bedroom:	16,12m ²
8. giyinme odası/ dressing room:	7,2m ²
9. e. banyo/ parent's bathroom:	3,5m ²
10. banyo/ bathroom:	4,5m ²
11. yatak odası/ bedroom:	13,35m ²
12. banyo/ bathroom:	3,40m ²
13. balkon/ balcony:	6,22m ²
14. balkon/ balcony:	4,25m ²





Parking

Turkish Bath

Sauna

Social Facilities

Swimming Pool

Children Playground

Gym

Green areas

Security System





Project Location

Istanbul Airport : 50 km

Marmara Sea : 2 km

Metrobus Station : 30 km

Taksim : 80 km

Eminönü : 76 km

Nearest Mall : 5 km

Nearest Hospital : 10 km







 +90 552 866 55 57

 info@fidanproperty.com

 www.fidanproperty.com