



**FIDAN**

PROPERTY

**FI 375**

# General Information

Location **İstanbul – Pendik**

Number of apartments **154**

Apartment type **1+1 - 2+1 - 3+1**

Price **Starting from 238.500 \$**

Area **106 - 217 m2**

Distance to Taksim **40 Minutes**

Distance to Sabiha Airport **12 Minutes**

Distance to metro station **3 Minutes**

Delivery date **06 / 2023**





# Price list & Payment method

## 1+1

106 - 138 m<sup>2</sup>

242.250 - 540.000 \$

## 2+1

128 - 184 m<sup>2</sup>

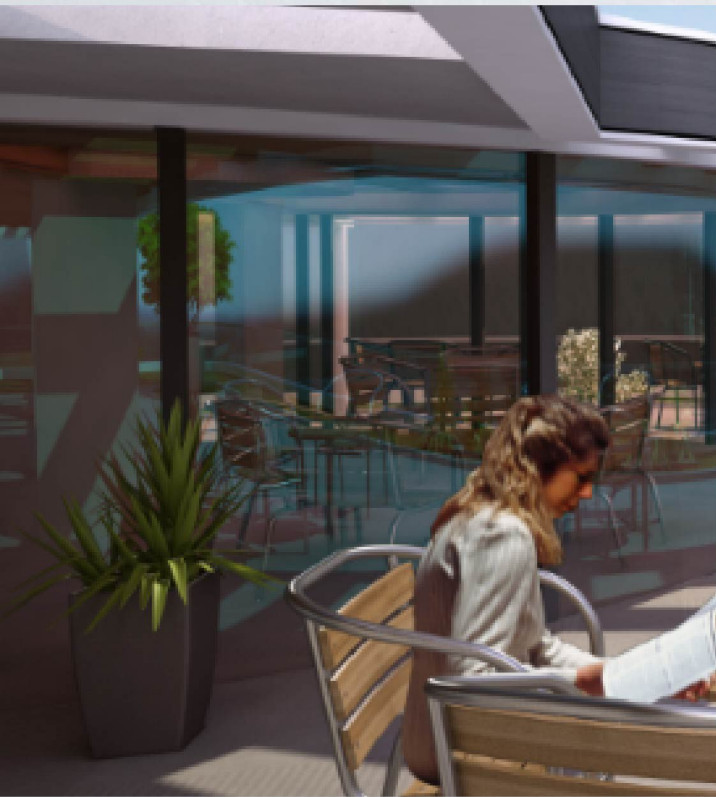
238.500 - 840.000 \$

## 3+1

186 - 217 m<sup>2</sup>

297.500 - 870.000 \$

**50 % Down Payment 12 Months Installment**



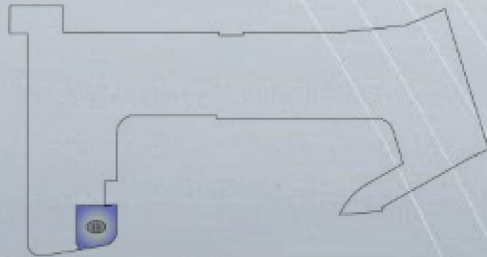
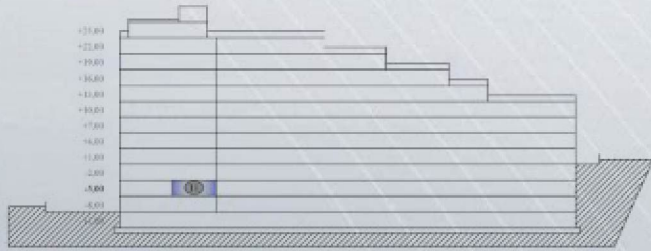


## "D11" TİP AD (1+1 Açık Mutfak)

Yaşam Alanı: 46,83 m<sup>2</sup>

Daire Alanı: 67,77 m<sup>2</sup>

Tapu Alanı: 96,77 m<sup>2</sup>



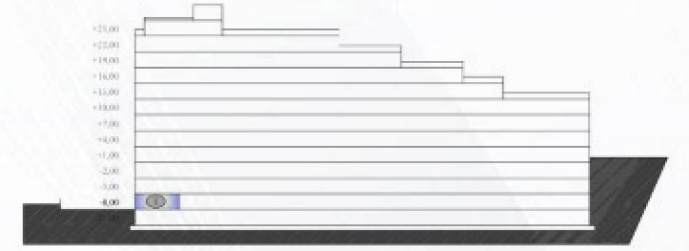
- 5.00 KOTU

## "D1" TİP BAA (2+1 Kapalı Mutfak)

Yaşam Alanı: 63,10 m<sup>2</sup>

Daire Alanı: 129,93 m<sup>2</sup>

Tapu Alanı: 185,53 m<sup>2</sup>



## "D6" TİP CA (3+1 Kapalı Mutfak)

Yaşam Alanı: 78,75 m<sup>2</sup>

Daire Alanı: 162,16 m<sup>2</sup>

Tapu Alanı: 231,55 m<sup>2</sup>



151,95 , -8,05  
151,70 , -8,30

152,00  
151,70

151,95 , -8,05

- 8.00 KOTU





# Social Facilities

Swimming Pool

GYM

Terrace

Cafe

Sauna

Parking

Security System

Green Areas





# Project Location

Sabiha Airport : 8 km

Marmara Sea : 3.5 km

Metro Station : 1.5 km

Taksim : 35 km

Eminönü : 39 km

Nearest Mall : 4 km

Nearest Hospital : 850 m

Pendik

Güzelyalı









 +90 552 866 55 57

 info@fidanproperty.com

 www.fidanproperty.com